

# THE BEEF LIFE CYCLE



1

## COW-CALF

Cows are bred and calves are born and raised every year on cow-calf farms and ranches, spending time grazing on grass pastures within sight of their mothers.



2

## WEANING

Beef calves are weaned away from their mothers between 6-8 months of age.

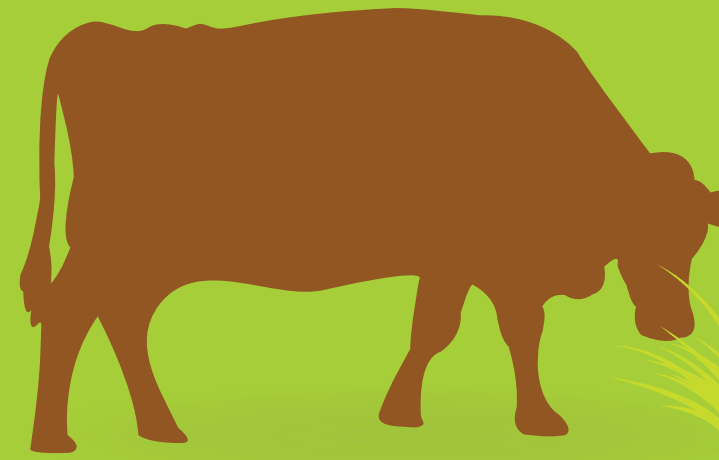


## CALVES FOR SALE

4

## LIVESTOCK AUCTION MARKETS

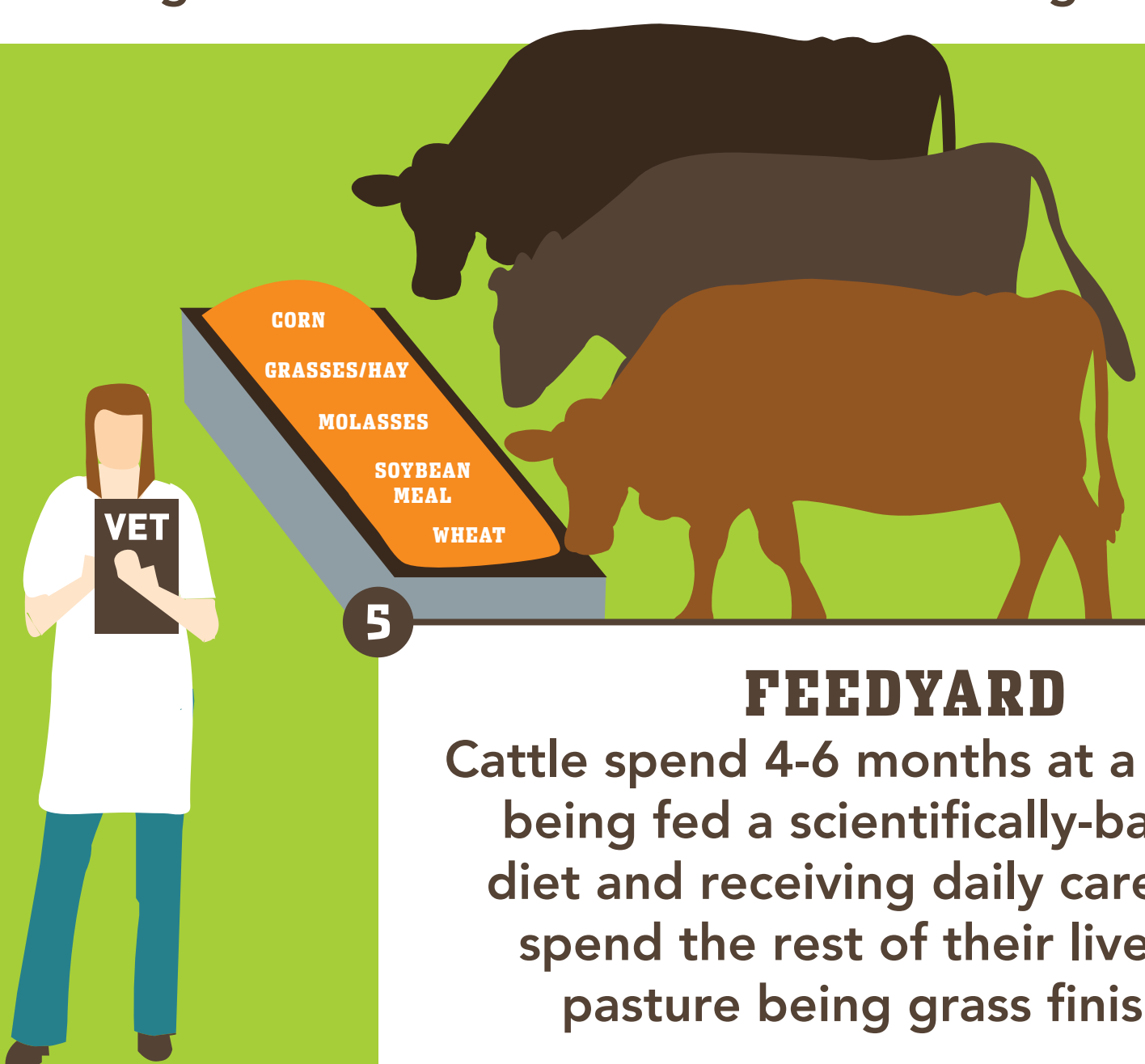
Many calves leave the farm or ranch where they were born and are sold at livestock auction markets to stockers and backgrounders between 6-12 months of age.



3

## STOCKERS AND BACKGROUNDERS

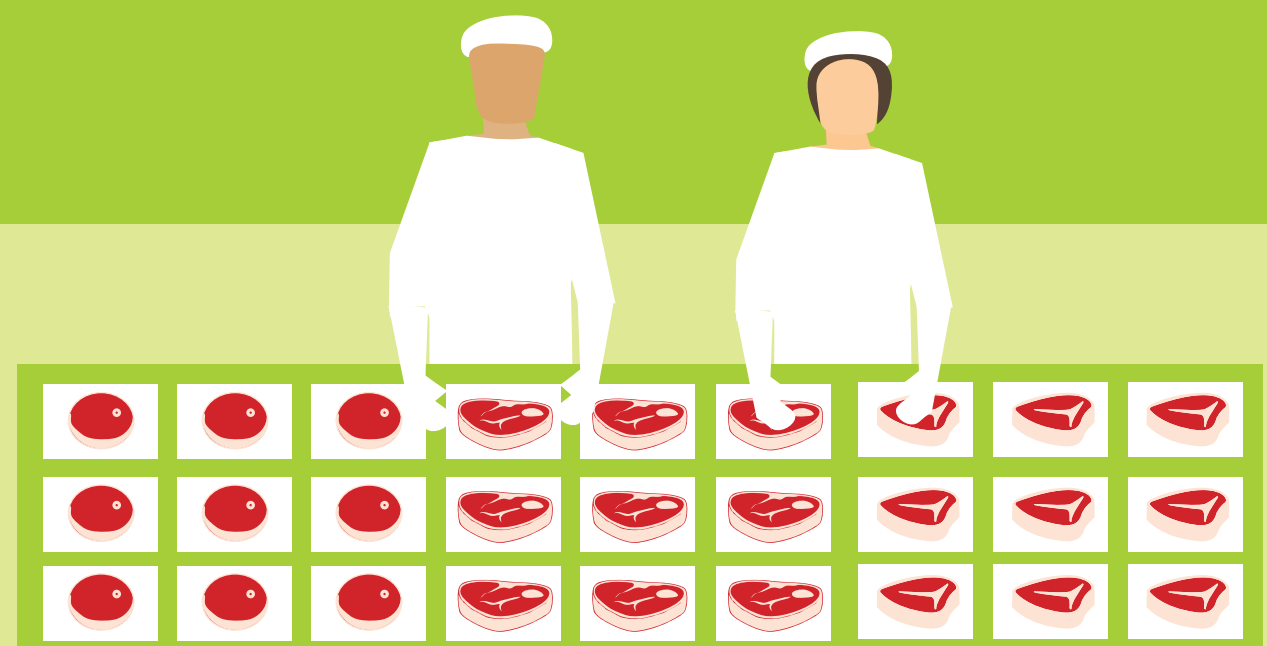
Between 6-12 months of age cattle spend time at stocker and backgrounder farms and ranches where they graze on a variety of pastures. Here they gain weight and convert forage and grass into lean protein.



5

## FEEDYARD

Cattle spend 4-6 months at a feedyard being fed a scientifically-balanced diet and receiving daily care. Some spend the rest of their lives on a pasture being grass finished.



6

## PACKING PLANT

Cattle are sent to a packer/processing facility to be slaughtered and processed then distributed to supermarket retailers and restaurants.

6A

Due to strong demand for U.S. beef, beef is **EXPORTED TO MORE THAN 130 OTHER COUNTRIES.**

7

Retailers and foodservice operators sell beef in **SUPERMARKETS AND RESTAURANTS.**



8

Beef helps nourish the bodies of **MILLIONS OF AMERICANS** by providing 10 essential nutrients.



Funded by the Beef Checkoff.